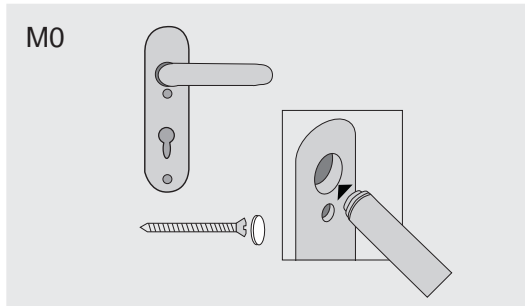
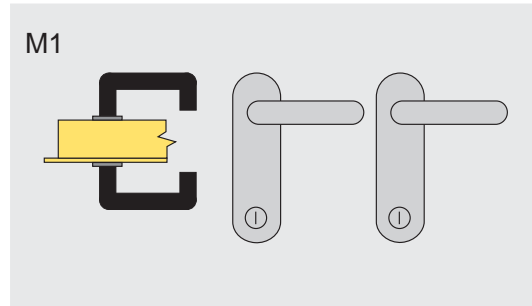


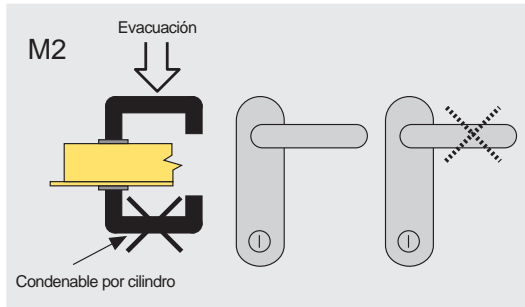
DOOR HANDLES TYPES



Standard door handle for **multiuse** doors incorporating standard cylinder lock fitting. Handle operation from both sides and lock facility both sides.

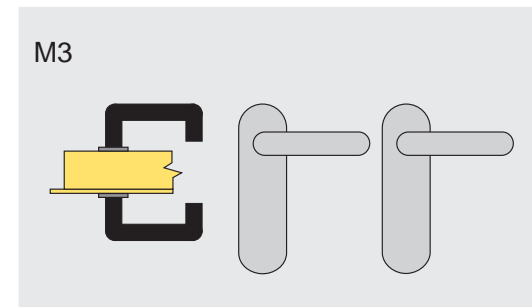


Standard door handle incorporating standard cylinder lock fitting. Handle operation from both sides and lock facility both sides.

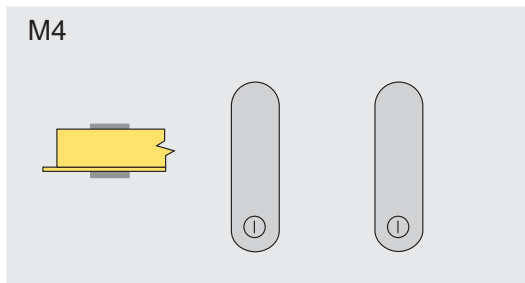


Antipanic handle (to push) with condensable handle by patent key and action on both sides.

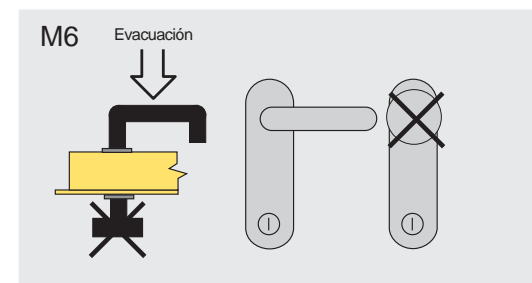
* INDISPENSABLE ANTIPANIC LOCK CR3 TYPE.



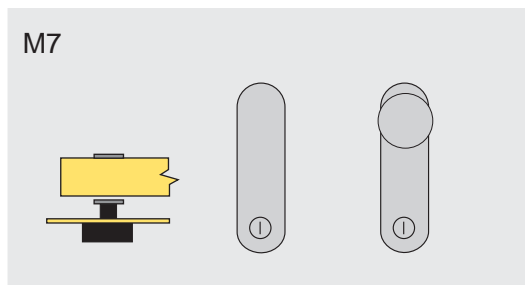
Standard door-handle operation from both sides. No lock feature..



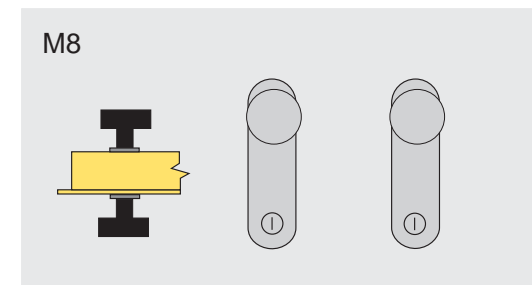
Cover plate on both sides incorporating standard cylinder lock fitting (C1). No door handle operation.



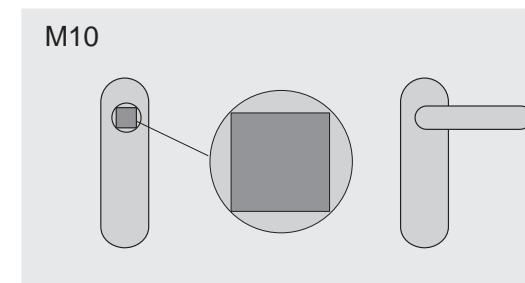
KIT GARAJE.- Fixed knob opposing standard door handle operation. Incorporates standard cylinder lock fitting from both sides



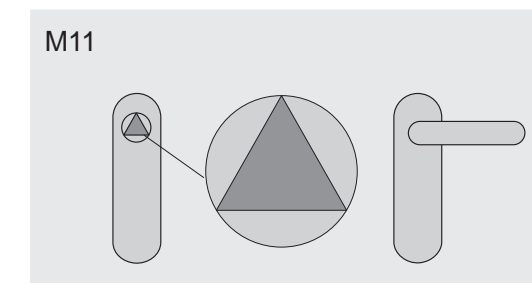
Fixed round knob with opposing cover plate feature. Incorporates standard cylinder lock fitting (C1) from both sides.



Round knob operation from both sides. Incorporates half cylinder lock fitting to allow operation from one side.



AGUAS" Locking system



ISABEL II Locking system

Doorset (M1) are supplied with grey plastic coated handle as standard. However any of the illustrated types can be supplied.

